



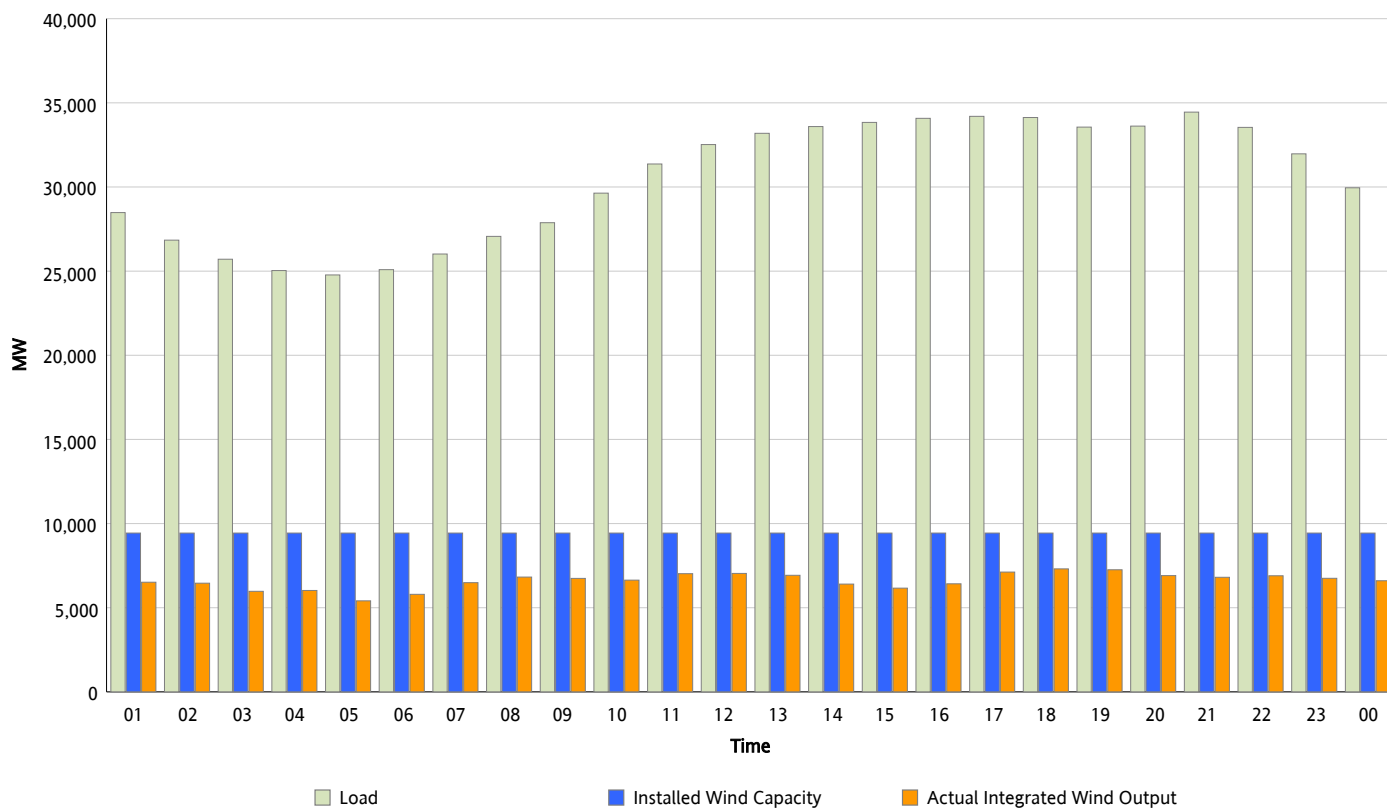
ERCOT Grid Operations

Wind Integration Report : 03/17/2012

Peak Load	34,448 MW
Load Peak Hour (HE)	21
Wind Over Peak	6,810 MW
Wind Record 03/07/12	7,599 MW
Max Wind Value*	7,510 MW
Wind Peak Time	17:01
Wind Integration %	22.02 %

Hourly Average Actual Load vs. Actual Wind Output

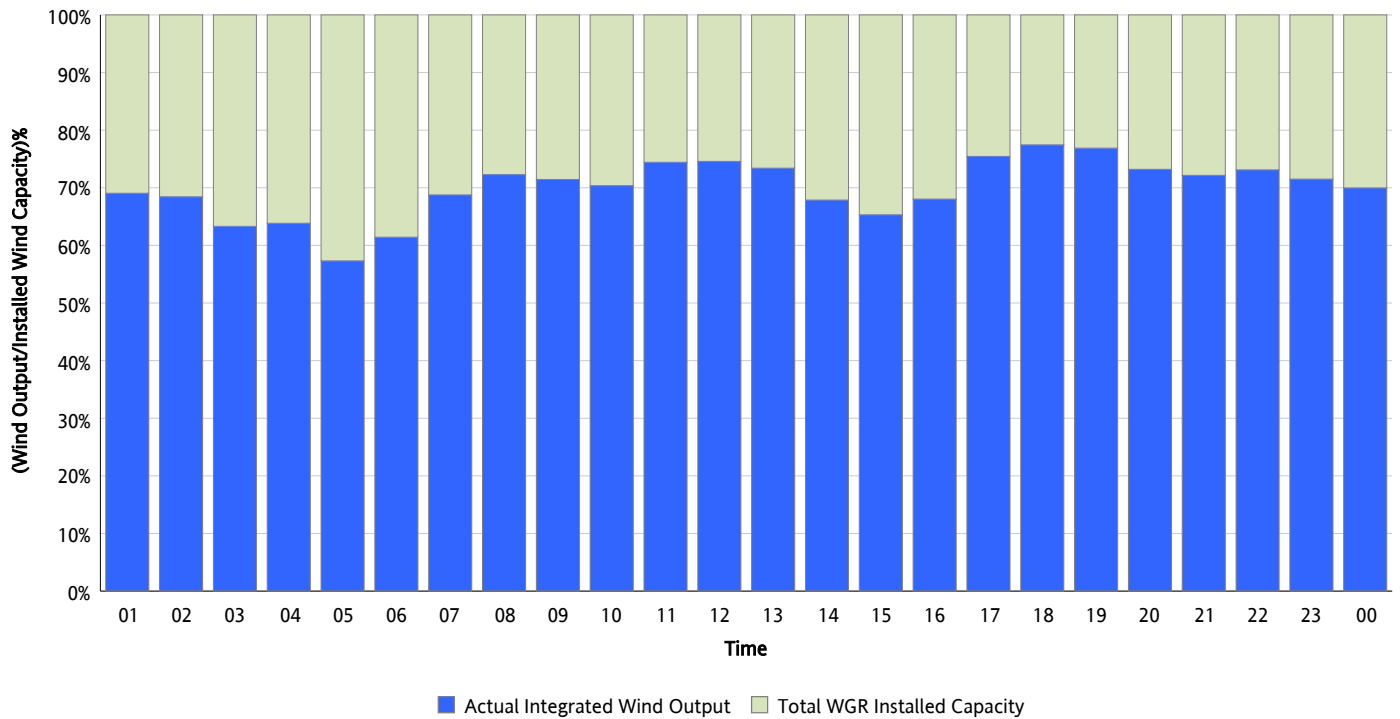
03/17/2012



* Wind Record and Wind Max represent instantaneous values and the rest of the values are integrated over the hour

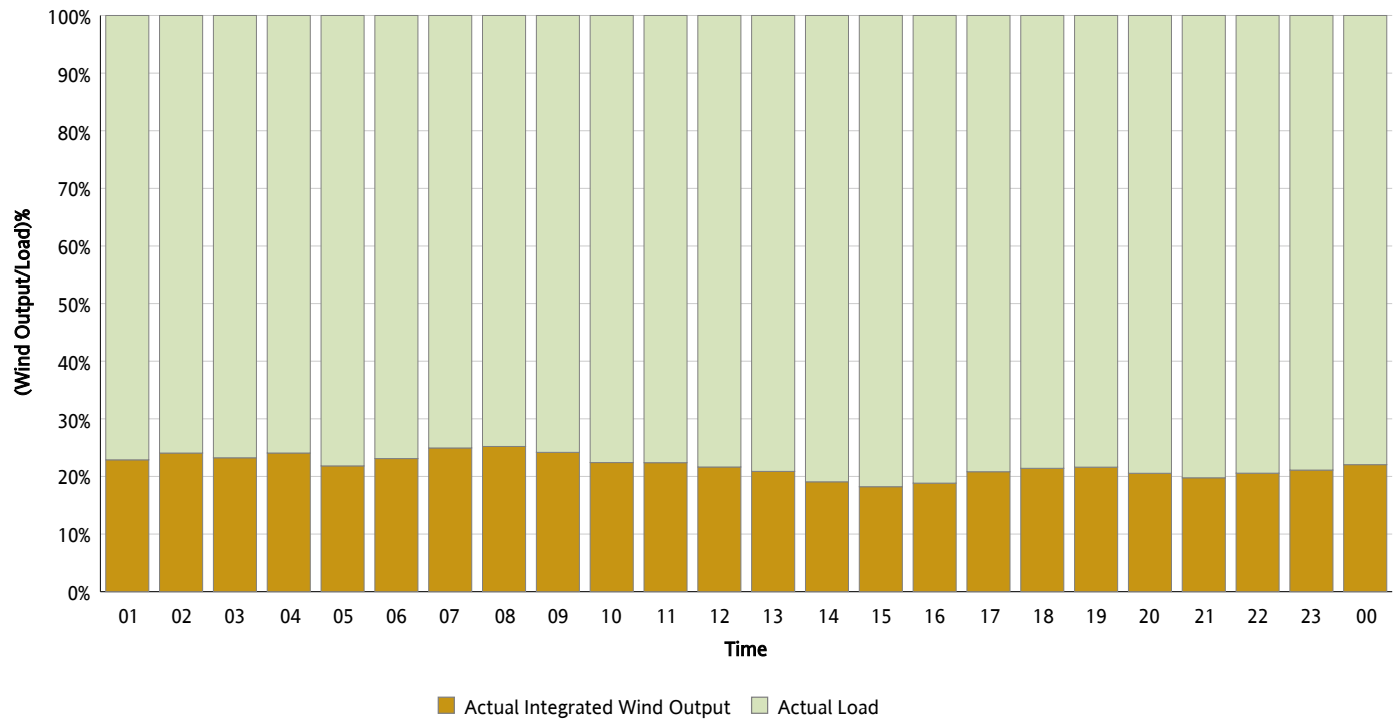
Actual Wind Output as a Percentage of the Total Installed Wind Capacity

03/17/2012



Actual Wind Output as a Percentage of the ERCOT Load

03/17/2012



ERCOT Load vs. Actual Wind Output

03/10/2012 - 03/17/2012

